

## 1. HARDWARE: GPS-RADIO MONITORING



### GuardMagic RVM1

universal vehicle GPS-UHF Messenger

The universal UHF radio device placed in yours vehicle and allow you to remote yours vehicle via UHF radio. You can receive information to yours "Radio Monitoring station" about the location and condition of yours vehicle (geographical location, speed, direction of movement, condition of external sensors and power supply).

- GPS monitoring (geographical location, speed);
- Driver identification;
- Immobilization function
- Status signal transmitting: Crash, Panic

( Frequency band : 400...435 MHz; 435...470 MHz; 465...500 MHz; 495...520 MHz)



### GuardMagic RVM2

universal vehicle GPS-VHF Messenger

The universal VHF radio device placed in yours vehicle and allow you to remote yours vehicle via VHF radio. You can receive information to yours "Radio Monitoring station" about the location and condition of yours vehicle (geographical location, speed, direction of movement, condition of external sensors and power supply).

- GPS monitoring (geographical location, speed);
- Driver identification;
- Immobilization function
- Status signal transmitting: Crash, Panic

( Frequency band : 140...174 MHz )



### GuardMagic RXM1

Special UHF Data Radio Receiver with USB interface.

UHF Data Radio Receiver is intended for the function (construction) in the vehicles radio monitoring systems based in GuardMagic technology (vehicle modules GuardMagic RVM1).

- reception data on UHF radio channel, transmitted by vehicle modules GuardMagic RVM1;
- decoding of the received information;
- restoring the deformed information (the special communication protocol is applied);
- transformation the received information;
- transmitting the received information to the Personal Computer by USB interface.

( Frequency band : 400...435 MHz; 435...470 MHz; 465...500 MHz; 495...520 MHz)



### GuardMagic RXM2

Special VHF Data Radio Receiver with USB interface.

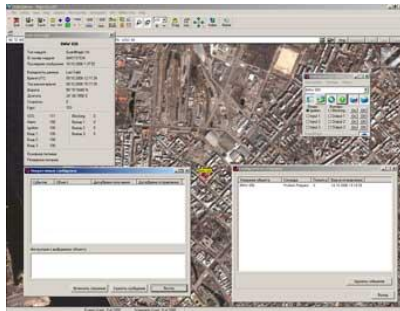
VHF Data Radio Receiver is intended for the function (construction) in the vehicles radio monitoring systems based in GuardMagic technology (vehicle modules GuardMagic RVM2).

- reception data on UHF radio channel, transmitted by vehicle modules GuardMagic RVM1;
- decoding of the received information;
- restoring the deformed information (the special communication protocol is applied);
- transformation the received information;
- transmitting the received information to the Personal Computer by USB interface.

( Frequency band : 140...174 MHz )



## 2. MONITORING SOFTWARE: VEHICLE GPS-GPRS MONITORING



### OziDispatcher2-UHF

Simple and non-expensive fleet monitoring software for radio monitoring system.  
Supports till 50 mobiles units GuardMagic RVM1 or GuardMagic RVM2.  
Data storage in universal exchange format (\*.gmt2).

OziExplorer mapping software

## 3. ADDITIONAL EQUIPMENTS



### GuardMagic RVM1, RVM2 programming tool (Serial interface RS-232)

The technological complete set for programming and changes of adjustments of modules  
**GuardMagic RVM1, RVM2** by personal computer