

1.1 HARDWARE: GPS-GSM/GPRS MONITORING



GuardMagic VB1

Simple GPS-GPRS vehicle module.
For On-Line Monitoring System (Vehicle fleet monitoring systems, AVL etc.). Universal communication protocol. Easy to installation and easy to use.

- GSM 900/1800/1900 GPRS (or GSM/GPRS Quad);
- Two main operation mode (Standard, Packet);
- Internal memory (230 TH records) for data storing;
- GPS monitoring (geographical location, speed);
- Status signal transmitting:

Crash, Panic, Event, Engine Overheat, Fuel Tank Empty (FTA), Attempt to Theft, Ignition, Car Alarm, GPS Alarm, Power Alarm.



GuardMagic VB2

GPS-GPRS vehicle module.
For On-Line Monitoring System (Vehicle fleet monitoring systems, AVL etc.). Universal communication protocol. Easy to installation and easy to use.

- GSM 900/1800/1900 GPRS (or GSM/GPRS Quad);
- Two main operation mode (Standard, Packet);
- Internal memory (230 TH records) for data storing;
- Immobilization function;
- Main fuel tank monitoring function – up to **TWO** tanks (GuardMagic FLPa fuel probe or regular analog fuel sensor);
- GPS monitoring (geographical location, speed);
- Driver ID transmitting;
- Status signal transmitting:

Crash, Panic, Event, Engine Overheat, Fuel Tank Empty (FTA), Attempt to Theft, Ignition, Car Alarm, GPS Alarm, Power Alarm.



GuardMagic VB3 - Basic model

Universal GPS-GPRS vehicle module.
For On-Line Monitoring System (Vehicle fleet monitoring systems, AVL etc.). Universal communication protocol. Easy to installation and easy to use.

- GSM 900/1800/1900 GPRS (or GSM/GPRS Quad);
- Two main operation mode (Standard, Packet);
- Internal memory (230 TH records) for data storing;
- Immobilization function;
- Main fuel tanks monitoring function – up to **THREE** tanks (GuardMagic DFLS3; GuardMagic DFLS4 sensor with digital interface EIA-485);
- GPS monitoring (geographical location, speed);
- Driver ID transmitting;
- Status signal transmitting:

Crash, Panic, Event, Engine Overheat, Fuel Tank Empty (FTA), Attempt to Theft, Ignition, Car Alarm, GPS Alarm, Power Alarm.



GuardMagic VB4 - Basic model

Advanced GPS-GPRS vehicle module.
For On-Line Monitoring System (Vehicle fleet monitoring systems, AVL etc.). Universal communication protocol. Easy to installation and easy to use.

- GSM 900/1800/1900 GPRS (or GSM/GPRS Quad);
- Two main operation mode (Standard, Packet);
- Internal memory (230 TH records) for data storing;
- Immobilization function;
- Main fuel tanks monitoring function – up to **THREE** tanks (GuardMagic DFLS3; GuardMagic DFLS4 sensor with digital interface EIA-485);
- Cargo fuel tanks monitoring function – up to **FOUR** cargo tanks (GuardMagic DFLS3; GuardMagic DFLS4 sensor with digital interface EIA-485);
- Temperature (and Humidity) monitoring function (up to SEVEN sensors);
- GPS monitoring (geographical location, speed);
- Driver ID transmitting;
- Status signal transmitting:

Crash, Panic, Event, Engine Overheat, Fuel Tank Empty (FTA), Attempt to Theft, Ignition, Car Alarm, GPS Alarm, Power Alarm.



1.2 HARDWARE: GPS-GSM MONITORING



GuardMagic VB5

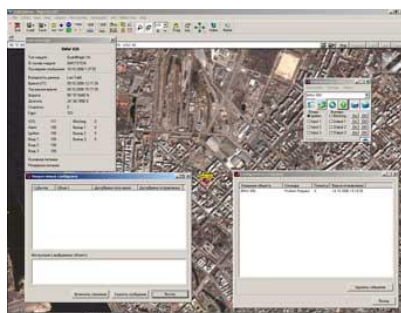
Special GPS-GPRS vehicle module for fuel transportation companies (Road tanker monitoring).

For On-Line Monitoring System (Vehicle fleet monitoring systems, AVL, fuel trailer monitoring etc.). Universal communication protocol. Easy to installation and easy to use.

- GSM 900/1800/1900 GPRS (or GSM/GPRS Quad);
- Two main operation mode (Standard, Packet);
- Internal memory (230 TH records) for data storing;
- Immobilization function;
- Main fuel tanks monitoring function – up to **THREE** tanks (GuardMagic DFLS3; GuardMagic DFLS4 sensor with digital interface EIA-485);
- Cargo fuel tanks monitoring function – up to **ELEVEN** cargo tanks, cargo compartments (GuardMagic DFLS3; GuardMagic DFLS4 sensor with digital interface EIA-485);
- Temperature (and Humidity) monitoring function (up to SEVEN sensors);
- GPS monitoring (geographical location, speed);
- Driver ID transmitting;
- Status signal transmitting;

Crash, Panic, Event, Engine Overheat, Fuel Tank Empty (FTA), Attempt to Theft, Ignition, Car Alarm, GPS Alarm, Power Alarm.

2.1 SOFTWARE (and Service): VEHICLE GPS-GPRS MONITORING



OziDispatcher3-GPRS

Simple and non-expensive real time vehicle monitoring software.

For GSM-GPRS monitoring systems

Vehicle modules series GuardMagic VB, GuardMagic VF.

Universal communication protocol (GPRS connection).

(has not Data Base and has not reporting function)

Supports up to 50 mobiles units.

OziExplorer mapping software



GPS WEB monitoring service

Coverage: **All world**

Service for vehicle WEB monitoring (vehicle monitoring via Internet).

Vehicle modules series GuardMagic VB, GuardMagic VF.

Visualization on maps, reports generation

VehicleStation 50, VehicleStation 150

Universal PC based GPRS fleet monitoring software.

Supports also: fuel monitor function, vehicle activity analysis function, driver activity analysis function, reports and diagrams generation.

Vehicle modules series GuardMagic VB, GuardMagic VF.

in development

FleetStation 100 (200; 500; 1000; 2000)

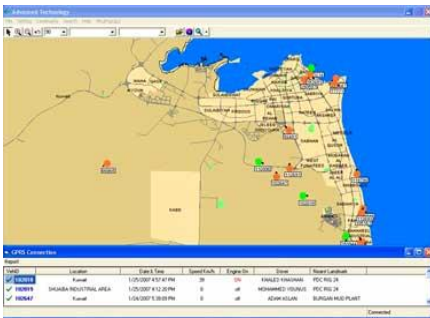
Universal PC based Client-Server GPRS fleet monitoring software.

Supports also: fuel monitor function, vehicle activity analysis function, driver activity analysis function, reports and diagrams generation. Set include license for 3 client software. Vehicle modules series GuardMagic VB, GuardMagic VF.

in development



2.2 MONITORING SOFTWARE (and Service): VEHICLE GPS-GPRS MONITORING



Advanced Technology (special solutions for Arabian Gulf Region).

Universal PC based monitoring software (GPRS connection) with internal maps of Arabian Gulf Region.

Client-server based. Support till 999 vehicles.

Support: GuardMagic VB series module

Arabic and English languages.

Internal maps: KSA, Kuwait, UAE, Bahrain, Qatar, Oman.

3. ADDITIONAL EQUIPMENTS, COMPONENTS (for Vehicle GSM/GPRS system)



GuardMagic VB programming tool

(Serial interface RS-232)

The technological complete set for programming and changes of adjustments of modules GuardMagic VB, by a personal computer



Fuel Level Sensor

Fuel level sensors for vehicle application.

See: Products for "Fuel Monitoring"